

# REDUCING THE CARBON FOOTPRINT OF A CENTRAL BANK

May 30th 2023





**Angola, Bahrain, Belgium, Brazil, Denmark, Egypt,  
Estonia, European Central bank, France, Germany,  
Greece, Haiti, Hong Kong, Indonesia, Italy, Malaysia,  
Mexico, Mongolia, Nigeria, Northern Macedonia,  
Portugal, Senegal-BCEAO, Singapore, Spain, Thailand,  
Tunisia, Ukraine, United Arab Emirates, United States-  
FED, Uruguay**



**ARE THERE ANY GOVERNMENT  
REGULATIONS YOUR INSTITUTION  
IS SUBJECT TO...  
REGARDING ENERGY SAVINGS IN  
YOUR COUNTRY?**

**yes, mandatory**

**42%**

**27%**

**yes, guideline**

**30%**

**not yet but planned**



**WERE/ARE THERE ANY NEW  
SPECIFIC GOVERNMENT  
REGULATIONS IN THIS FIELD IN  
YOUR COUNTRY LAST WINTER OR  
NEXT SUMMER THAT APPLY TO  
YOUR INSTITUTION ?**

**yes, mandatory**

**36%**

**27%**

**yes, guideline**

**36%**

**not yet but planned**



# HAS YOUR INSTITUTION IMPLEMENTED A FORMAL ENERGY SAVINGS POLICY? IF SO, SINCE WHEN HAS IT BEEN IN PLACE? AND WHEN WAS IT LAST UPDATED?

yes **40%**

**30%**

not yet, but planned

no **30%**



**IS THIS FORMAL APPROACH  
ACCOMPANIED BY  
QUANTIFIED MESURABLE  
OBJECTIVES AND/OR  
PERFORMANCE INDICATORS  
(KPIs)?**



**0%**

**yes, with quantified  
mesurable objectives**

**26%**

**yes, with quantified  
mesurable objectives and  
KPIs**

**41%**

**not yet, but planned**

**19%**

**no**

**15%**

**n/a**



# IS THERE AN ENERGY MANAGEMENT SYSTEM IN PLACE? IF SO, DOES IT MEET STANDARDS SUCH AS ISO 50001 OR EMAS?

**yes, in accordance with a  
national/international  
standard**

**11%**



**yes (but without  
compliance to a  
national/international  
standard)**

**15%**



**not yet but planned**

**33%**



**no**

**41%**



**IF NO, IS ENERGY CONSUMPTION  
MANAGED IN A SYSTEMATIC  
AUTOMATED WAY? FOR EXAMPLE, ON  
THE BASIS OF PROCEDURES, ALERTS,  
AUTOMATIC START-UP OF HEATING,...**

**yes**  
**33%**

**19%**  
**no**

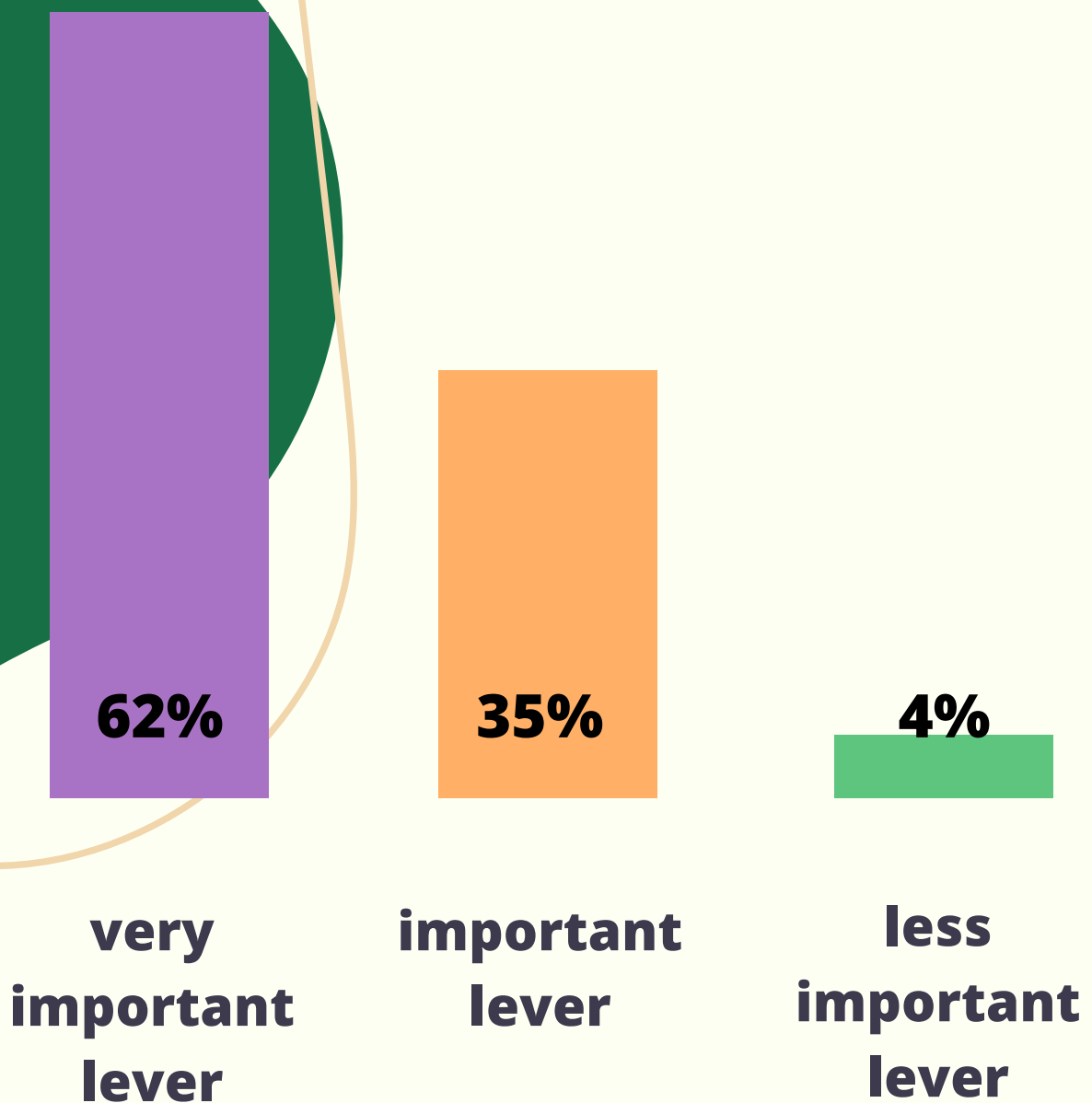
**11%**  
**not yet but  
planned**

**n/a** **37%**

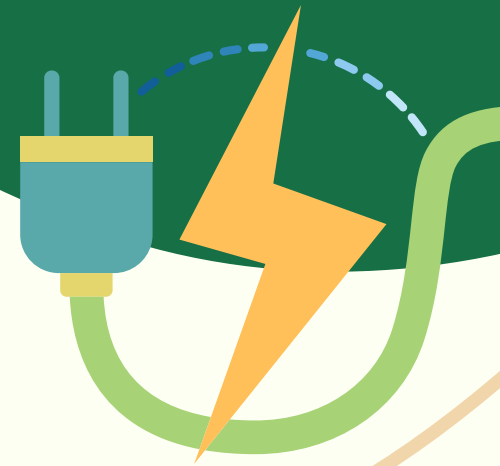




# TO WHAT EXTENT DO YOU BELIEVE THAT REDUCING YOUR ENERGY CONSUMPTION IS A LEVER IN YOUR EFFORTS TO REDUCE GHG EMISSIONS?



# WHICH MEASURES ARE IN PLACE/IMPLEMENTED BY YOUR INSTITUTION TO SAVE ENERGIES ? PLEASE SPECIFY IF MANDATORY OR VOLUNTARY BASIS/GUIDELINES ADRESSED ?



<b>Max. temperature heating</b>	<b>21%</b>
<b>Min. temperature cooling</b>	<b>21%</b>
<b>No heating of common spaces</b>	<b>11%</b>
<b>All non security lights must be switched off at night</b>	<b>31%</b>
<b>Water heaters in toilets and/or kitchenettes switched off</b>	<b>16%</b>
<b>Increase teleworking (For instance make teleworking mandatory several days a week or implement a mandatory teleworking day for all eligible staff)</b>	<b>16%</b>
<b>Staff gathering to reduce the area to be heated and lighted? (For instance closing some areas/buildings some days)</b>	<b>3%</b>
<b>Mandatory shutdown of computers, screens, printers and photocopiers at night?</b>	<b>35%</b>
<b>Works on heating systems / facilities</b>	<b>45%</b>
<b>Lighting replacement by less consuming lights (LEDs)</b>	<b>46%</b>
<b>Substitutional installations (photovoltaic, etc.)</b>	<b>26%</b>
<b>Other measures</b>	<b>24%</b>
<b>None of these</b>	<b>4%</b>

# WHAT DO YOU THINK ARE THE MAIN OBSTACLES OR DIFFICULTIES (INTERNAL AND EXTERNAL), AT YOUR INSTITUTION, TO DO MORE IN THIS FIELD ?

**16%**

people do not always care / Communication

**18%**

budget

**15%**

lack of incentives from an operational point of view

**23%**

lack of clear environmental laws, targets and guidelines

**18%**

technical feasibility

**10%**

lack of information / training

**2%**

others



**HAVE YOU TAKEN ANY SPECIFIC MEASURES FOR CERTAIN BUSINESS LINES? IF YES, PLEASE SPECIFY THE BUSINESS LINES CONCERNED.**

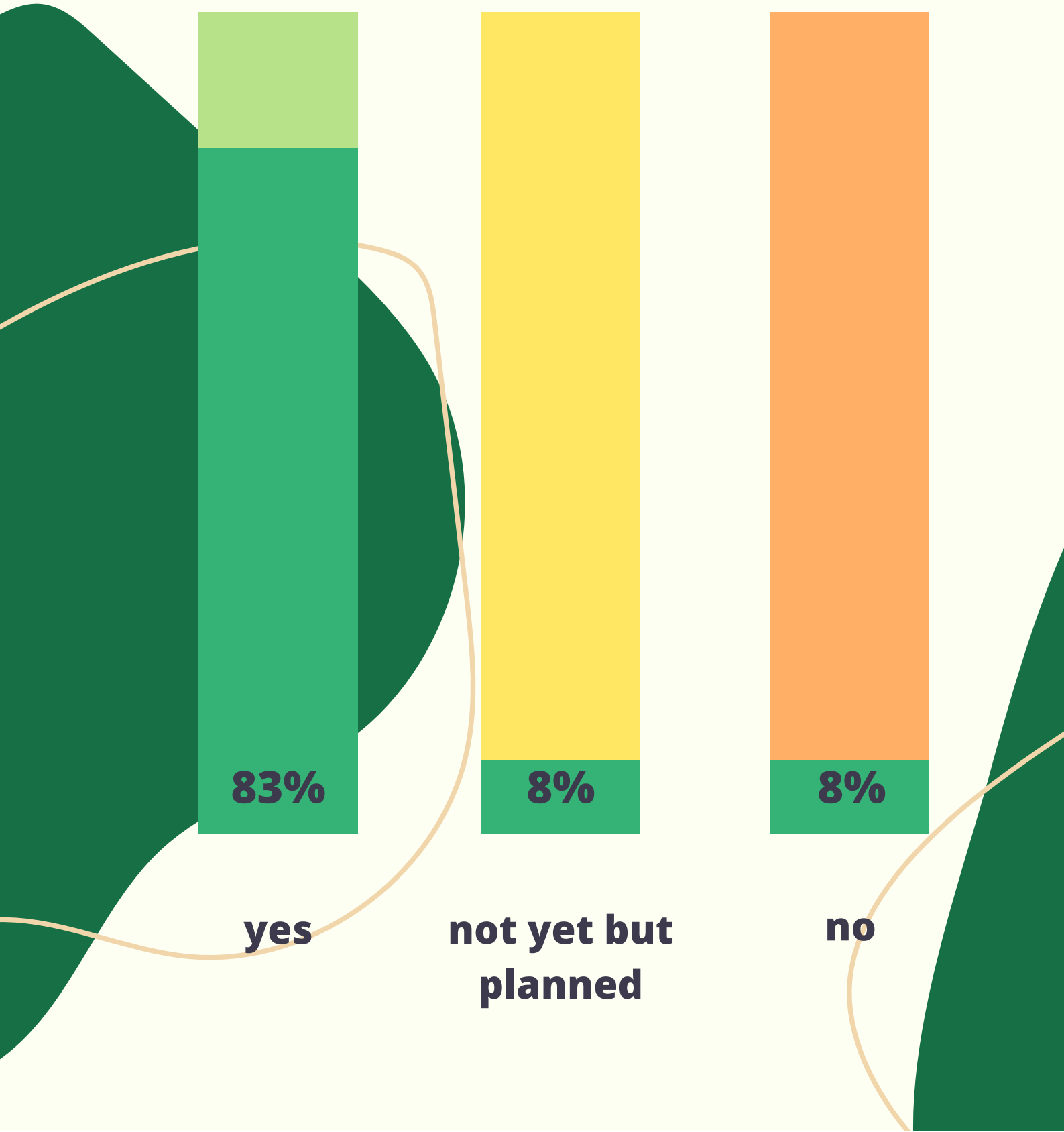
**yes**

**22%**

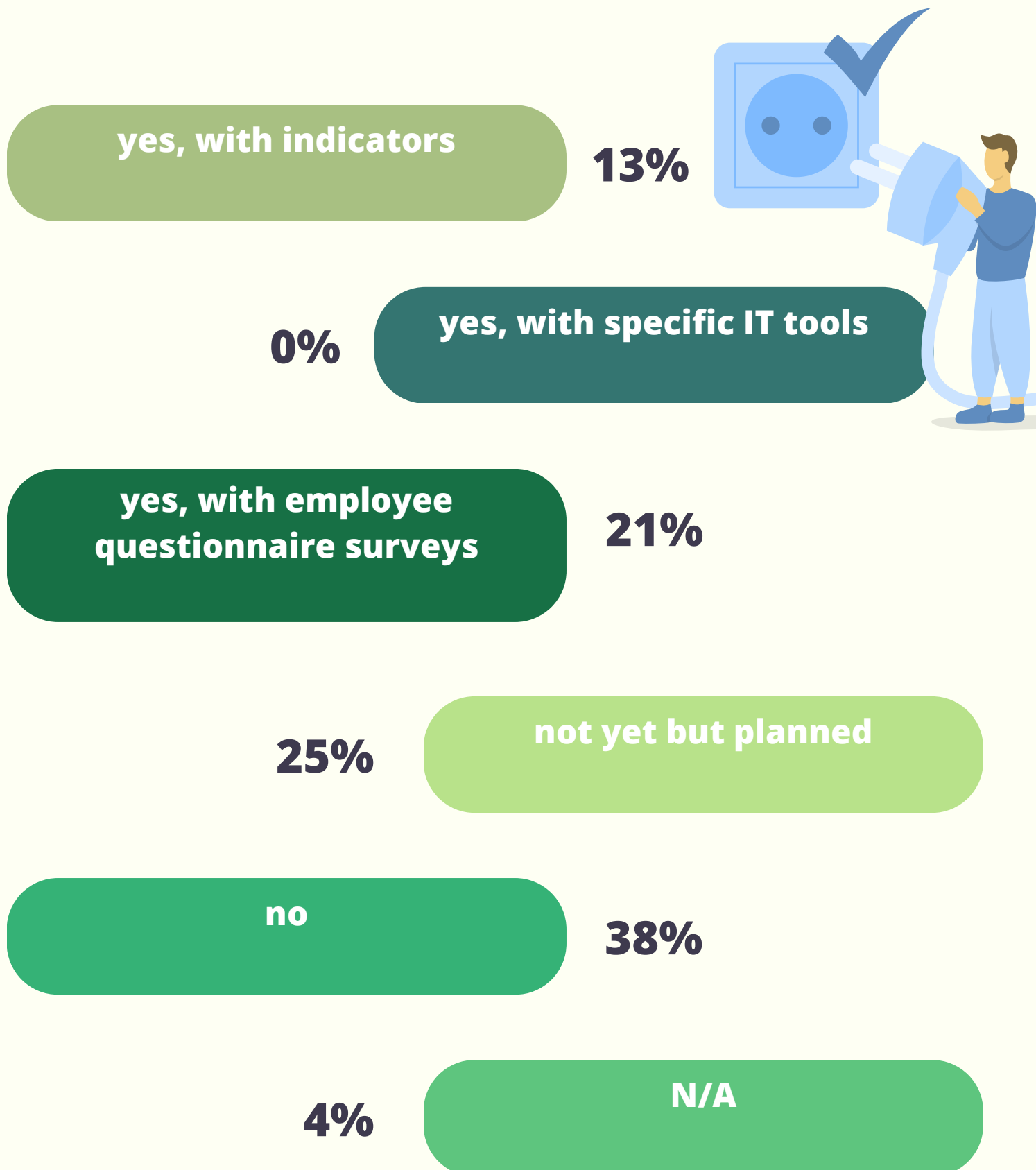
**no, all business lines  
are treated in the same  
way**

**78%**

# ARE THERE ANY AWARENESS RAISING ACTIONS WITHIN YOUR INSTITUTION AIMING AT IMPROVING EMPLOYEE COMMITMENT TOWARDS ENERGY CONSUMPTION?



# ARE YOU ABLE TO EVALUATE THE IMPACT OF ANY AWARENESS RAISING ACTION ON THE REDUCTION OF ENERGY CONSUMPTION (E.G. EFFICIENCY INDICATORS) ?





Ibfi

DATA CONTAINED IN THIS DOCUMENT ARE CALCULATED FROM PARTICIPANTS' RESPONSES TO A QUESTIONNAIRE CIRCULATED PRIOR TO THE CONFERENCE.

NO ATTEMPT HAS BEEN MADE TO VERIFY ACCURACY.

DEFINITIONS AND METHODOLOGIES DIFFER ACROSS JURISDICTIONS.

ALL FIGURES HAVE BEEN ROUNDED TO THE NEAREST WHOLE NUMBER. HENCE, IN SOME CASES THE ADDITION OF PERCENTAGES MAY NOT YIELD 100%